



## Fire alarm systems Web-server 1588

- Connection of EBL512 or EBL128 to Internet / an intranet (LAN)
- E-mails in case of special events
- Gateway function

### General

The web-server 1588 consists of a dark green plastic cabinet, which shall be vertically mounted on a symmetric 35 mm DIN rail. (The DIN rail is supplied in system EBL128.)

1588 shall be mounted outside and close ( $\leq 3$  m) to an EBL512 c.i.e. and inside an EBL128 c.i.e. A cable & accessories kit for both systems is supplied.

### Functions

The Web-server unit 1588 has three functions. One, two or all three can be used.

**Web-server** Used when one or more EBL c.i.e:s shall be connected to Internet / an intranet (LAN), in order to present the actual status in a PC or Pocket-PC using the web browser Microsoft Internet Explorer. A *User name* and a *Password* may be used.

**E-mail client** Used to send an e-mail in case of fire alarm, fault, disablement / re-enablement and/or service signal.

**Gateway** One of the following gateway functions can be used in each 1588:

*EBL Talk*, used to transmit and present fire alarm information in a separate PC system. (Like the Data converter 2292.)

*Tateco*, used to transmit and present fire alarm information in an Ascom Tateco paging system. (Like the Data converter 2291.)

A PC tool, **Web512 Config tool** and **Web128 Config tool** respectively, is used for the configuration, which is downloaded to the web-server via TCP/IP.

### Interfaces

The following interfaces are available:

**PLC COM. (RS232C)** RS232C (without handshake), used to connect the web-server to an EBL c.i.e.

RS232 connection cable is supplied and shall be connected to the plug-in screw terminal block (Send – Receive – Ground).

**Modem COM. (RS232C)** Used to connect the web-server to a modem, a separate PC system, etc. e.g. when the gateway function is used. A 9 ways male "D" connector, compatible to an IBM PC serial port.

(A cable, with a female connector, is not supplied.)

**Ethernet COM. (10 BASE-T)** Used to connect the web-server to Internet / an intranet (LAN). An RJ45 connector for a standard Ethernet CAT.5 cable.

(An Ethernet CAT.5 cable is not supplied.)

**Power supply** Used to connect the web-server to a power supply (i.e. to the EBL c.i.e. or an external equipment).

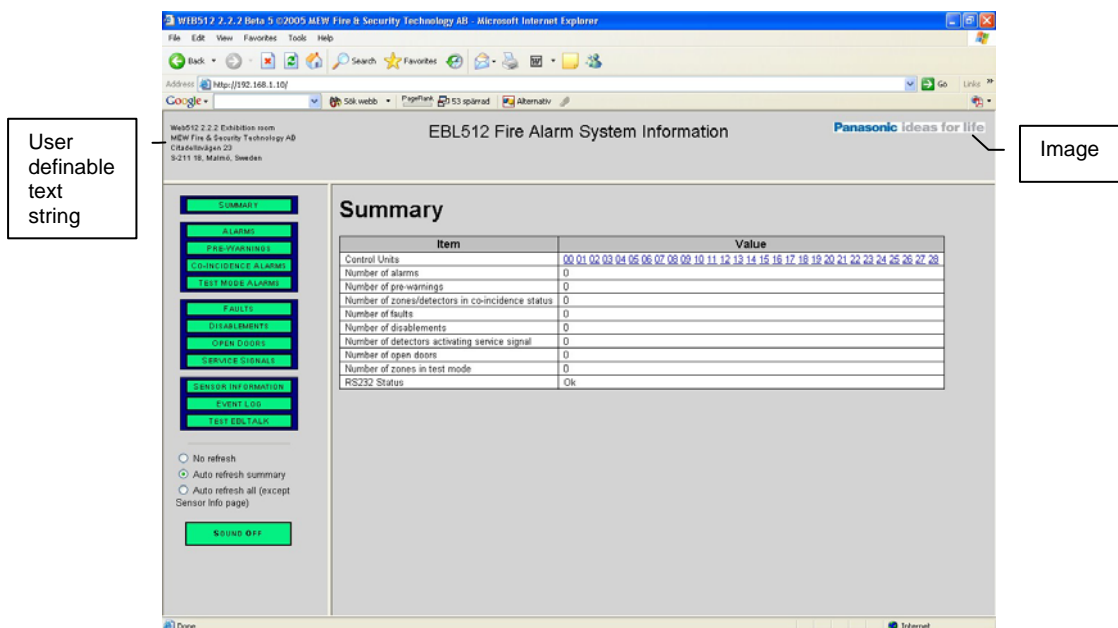
Power cable is supplied and shall be connected as follows: **Brown:** +24 V DC; **Black:** 0 V (GND); **Blue:** Function earth (must be connected to **Frame Ground**).

### Product applications

Web-server 1588 can be used in the EBL512 system (SW version  $\geq 2.2$ ) or the EBL128 system. It is intended for indoor use and in dry premises.

## Type number

1588                      Web-server (incl. RS232C cable and power supply cable for system EBL512 (3 m) and system EBL128 (0.65 m) respectively.)



The **Web512** start page can look like this. In the upper frame can to the left be shown a user definable text string (installation name, location, etc.) and to the right an image, e.g. a logotype (≤ 10 Kbytes and max. 210 x 56 pixels).

A demo installation with a web-server 1588 is available on Internet:

PC: <http://Web512.mfstech.com>    Pocket-PC: <http://Web512.mfstech.com/mobile.htm>)

User name: **MEW** and Password: **MEW**

## Technical data

Voltage (V DC)	
rated	24
allowed	10.8-26.4
normal	24
Current consumption at norm. volt. (mA)	
quiescent	60
max.	65
Ambient temperature (°C)	
operating	0 to +55
storage	-20 to +70
Ambient humidity (% RH)	Max. 85, non condensing
Ingress Protection rating	IP20
Weight (g)	
Web-server only	90
Size H x W x D (mm)	
Web-server only	90 x 25 x 69.5
Construction / Colour	
Web-server	ABS plastic / Dark green
Approvals	CE

All technical features and data are subject to changes without notice, resulting from continuous development and improvement.

Product Leaflet	Date of issue	Revision / Date of revision
MEW00478	2004-02-13	2 / 2006-08-30