

Panasonic



EBLOne

The new standard

Safety innovation, our passion

www.panasonic-fire-security.com

Experience the next level

The new innovative EBLOne control unit sets a new standard in one loop fire detection systems. It features a modern and discrete design that will impress architects and end users, combined with the most intuitive user interface to make installation and maintenance easier than ever before.

Innovative elegance

Its compact size and contemporary design makes it suitable for a variety of environments, from hotels to small industries or kindergartens.

Unique user interface

Built up around a color touch screen with integrated status LEDs, as the complete user interface.



EBLOne setup Wizard

Auto set-up

The EBLOne revolutionizes commissioning with its graphic LCD interface, eliminating the need for a PC and taking it to the next level of ease.



Status



Disable



Test



Settings



Installation



Maintenance

App based menu system

An easy-to-navigate structure featuring a clear path to all functions at the top for efficient task completion.



230 VAC



-5 to +40°C



425x310x120mm



Built-in
1 or 2*17 Ah



4kg



< 95%



IP30

Completely new, but still familiar

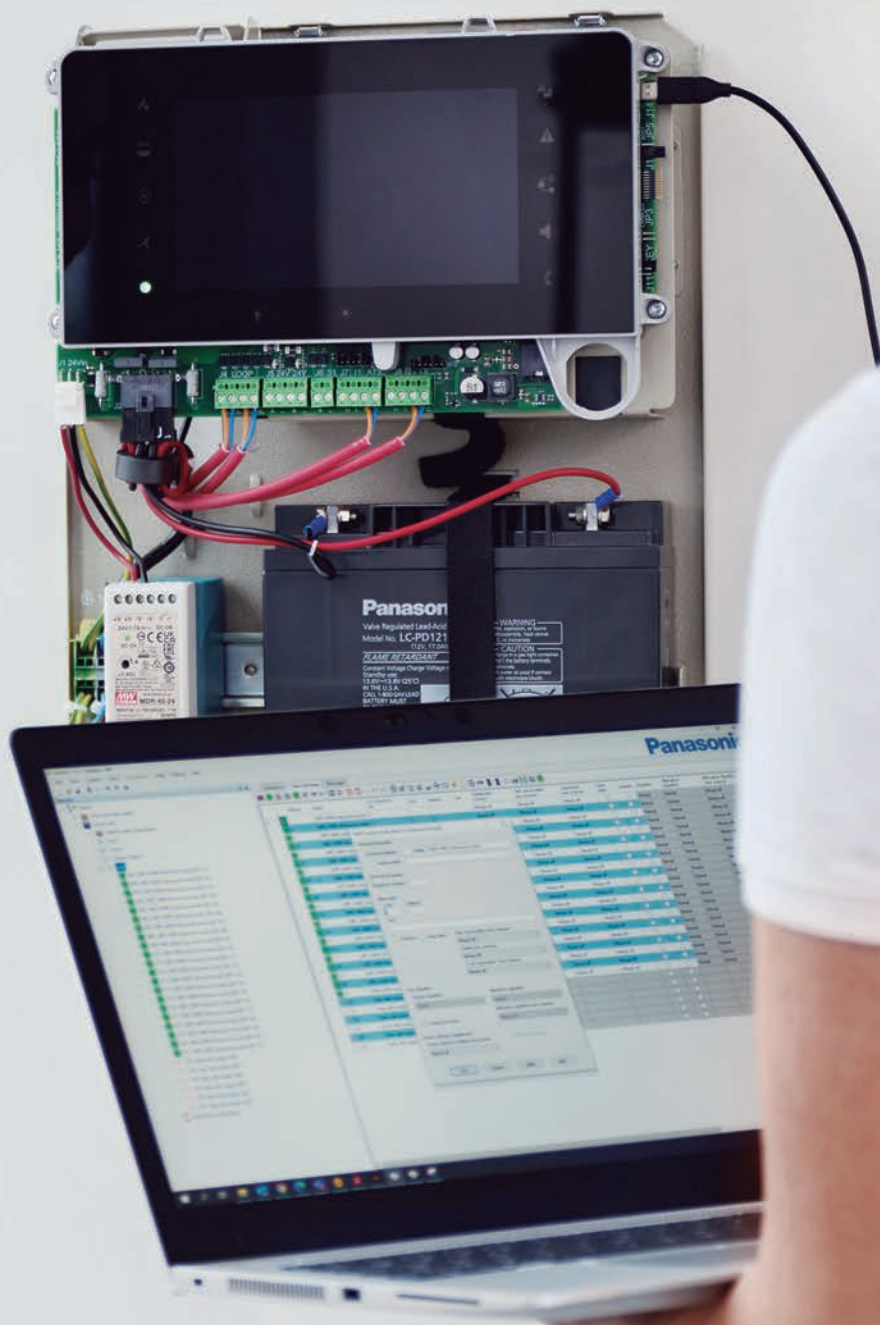
Fully compatible with all state-of-the-art Panasonic loop units and the cutting edge EBLWin.

COM-LOOP

COM-loop	1
SUB-loops	Max. 4
Addresses	253
Isolators	128
Wireless devices	Max. 64

CONNECTIONS

Outputs for routing equipment	2
24 V programmable voltage output	1
24 V power supply outputs	3
Programmable inputs	2
USB interface (Type C)	1



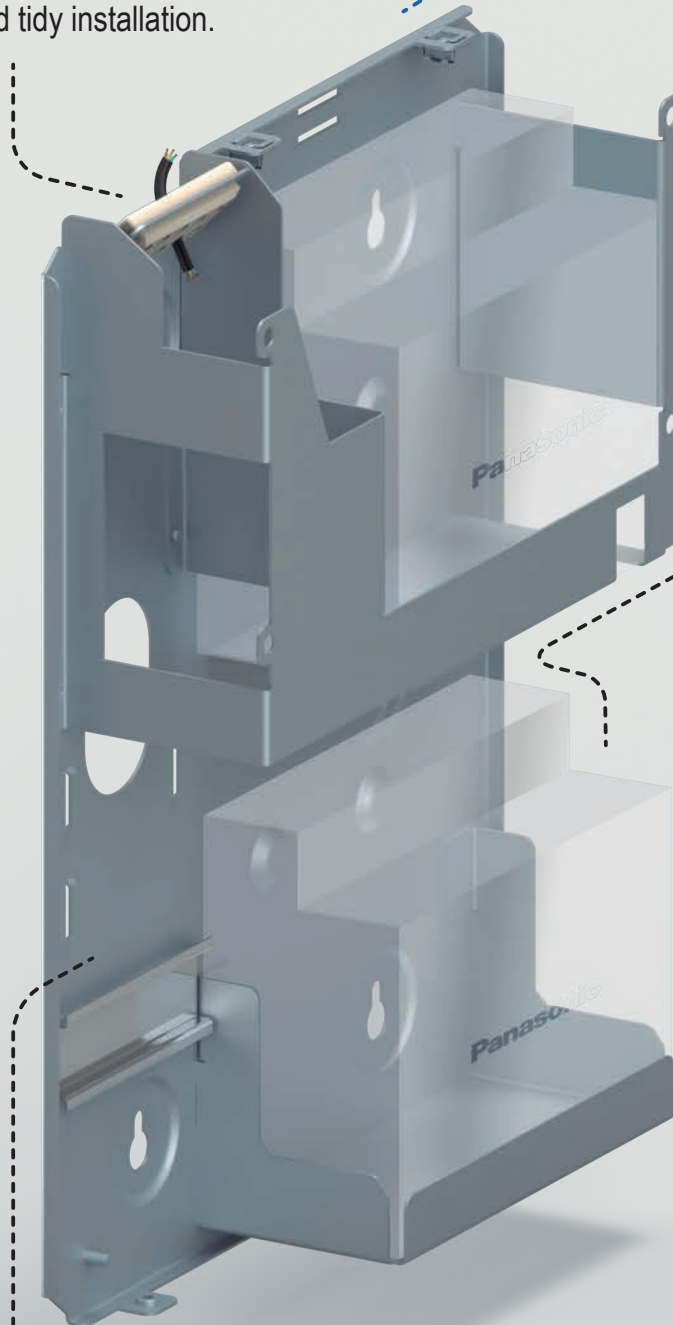
Optimised build up...

1

Metal Chassis

Hot galvanized and painted sheet metal for durability and elimination of sharp edges.

Integrated cable guidance
For a clean and tidy installation.



Battery holders

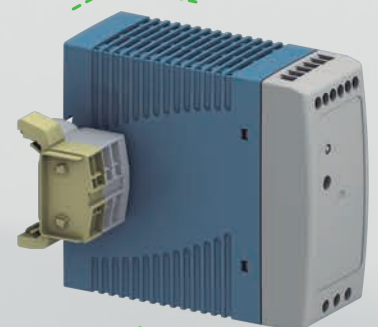
Use one or two batteries depending on the load and back up time needed.

EN54

EN54-2
EN54-4



Standard DIN rail
For power supply, Gateway and 230V connection block.



with three main parts

2

Electronics Module

Consists of the LCD module and PCBA and is mounted with 4 screws for easy installation and maintenance.



Optional lock

For fire brigade panel functionality.

3

Front Cover

Light weight cover in PC/ABS with high flammability class (V0).



Elegance and security anywhere

Restaurants and hotels

Wireless detectors and manual call points
Integrated exit and emergency lights
Detectors with AI for kitchen and challenging areas
Sounder bases, sirens and visual alarm devices

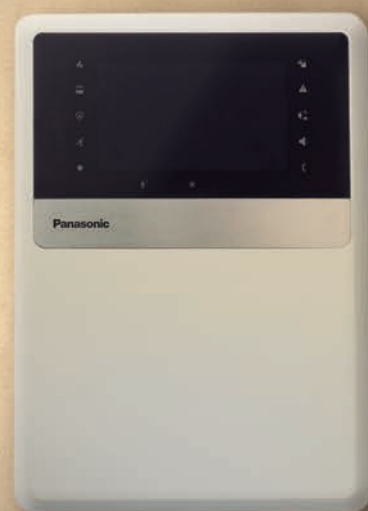
Apartment buildings

Wired and wireless detectors
Local alarm acknowledge units, wireless and wired
Sounder bases and sirens
Loop expander and I/O units



Schools and kindergartens

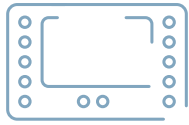
- Wired and wireless detectors
- Integrated exit and emergency lights
- Sounder bases, sirens and visual alarm devices
- Manual call points



Offices and small industry

- Detectors with AI
- Aspirating and EX detectors for tough areas
- Integrated exit and emergency lights
- Sounder bases, sirens and visual alarm devices
- Loop expander and I/O units

Unique user interface



With the **integrated and symbol based status LEDs** you instantly get an overview of the status of the fire alarm system.



The **colour touch display** is used for CIE operations such as commissioning, test and maintenance.



The **LCD works as an alarm presentation unit** enabling fire brigade to get full information and reset and silence alarm devices.



App based menu system

Deviations highlighted

Easy to navigate with path function

6 main applications
Status, Settings, Disable, Installation, Test and Maintenance

Clear visual menus and sub-menus
with symbols and texts



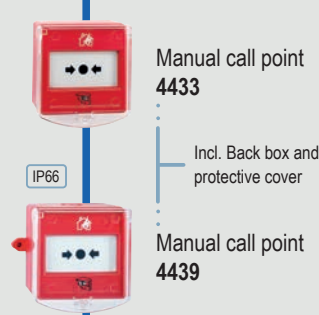
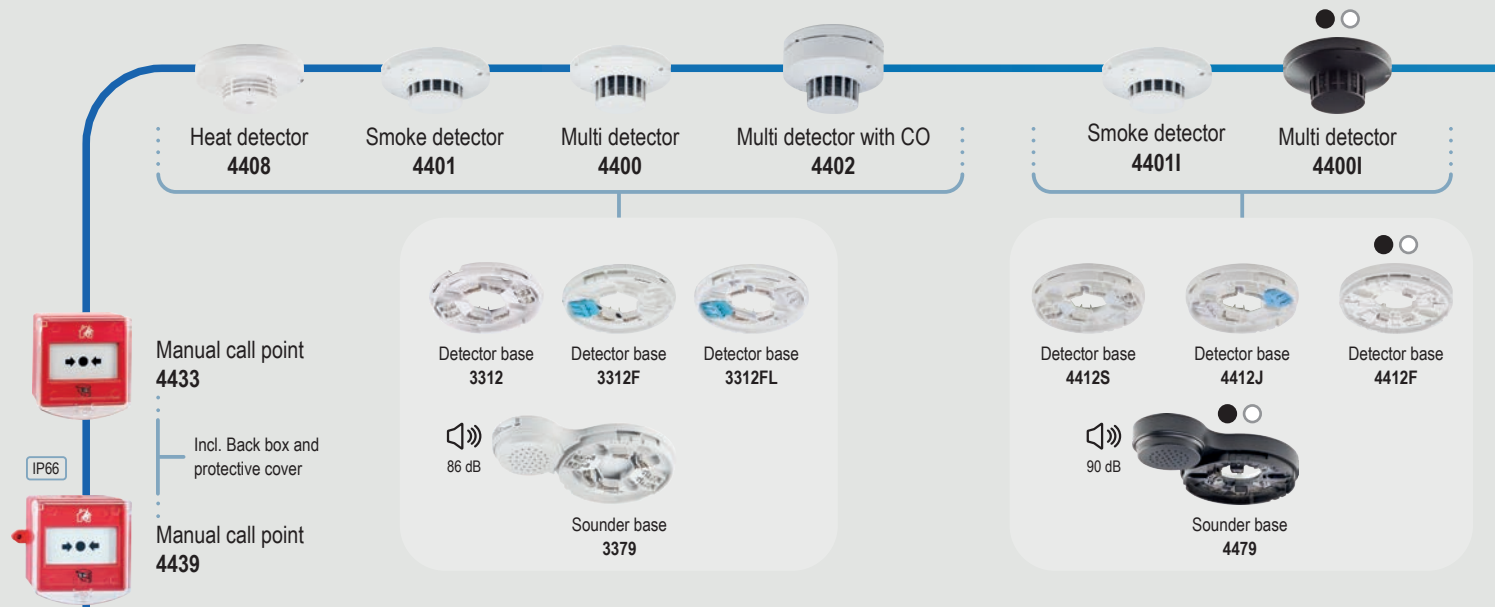
Two fast and easy commissioning options

Auto set-up wizard

A wizard-based graphical tool guides you through the process, eliminating the need for a PC, and allowing you to set up users and passwords, assign zones and addresses, and add alarm texts.

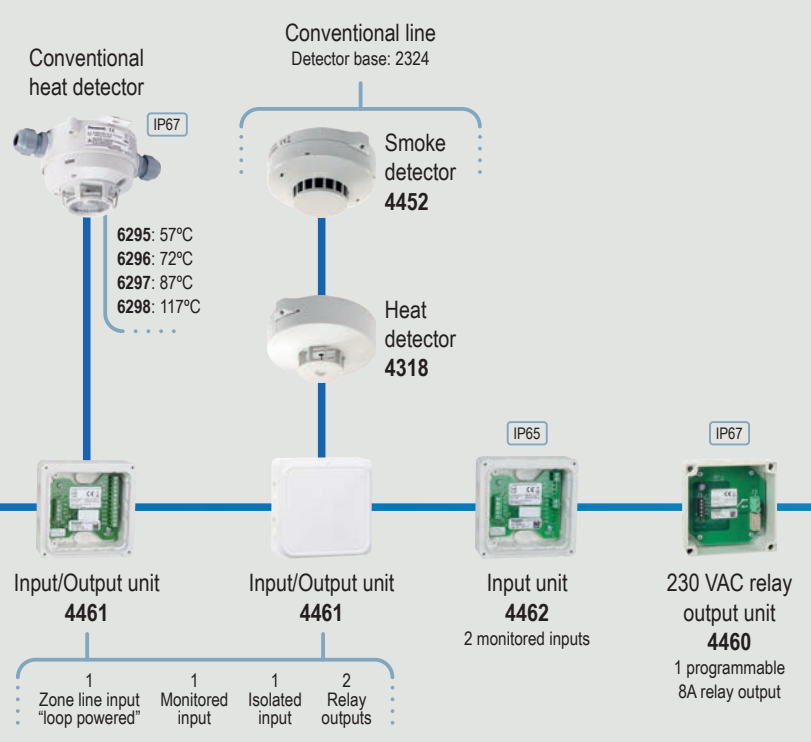
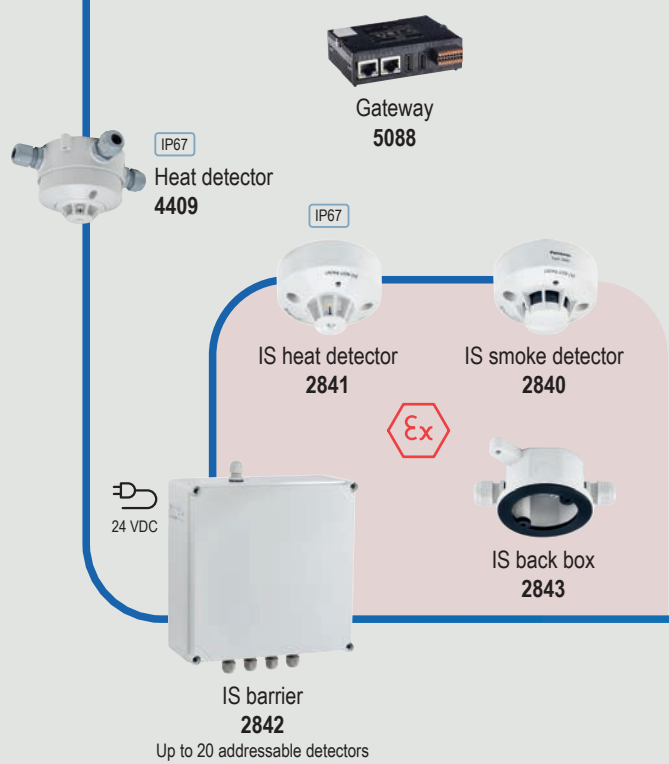
EBLWin software

Our program can of course also be used with EBLOne. Auto address by simply connecting to the system and let EBLWin guide you thru the complete process.

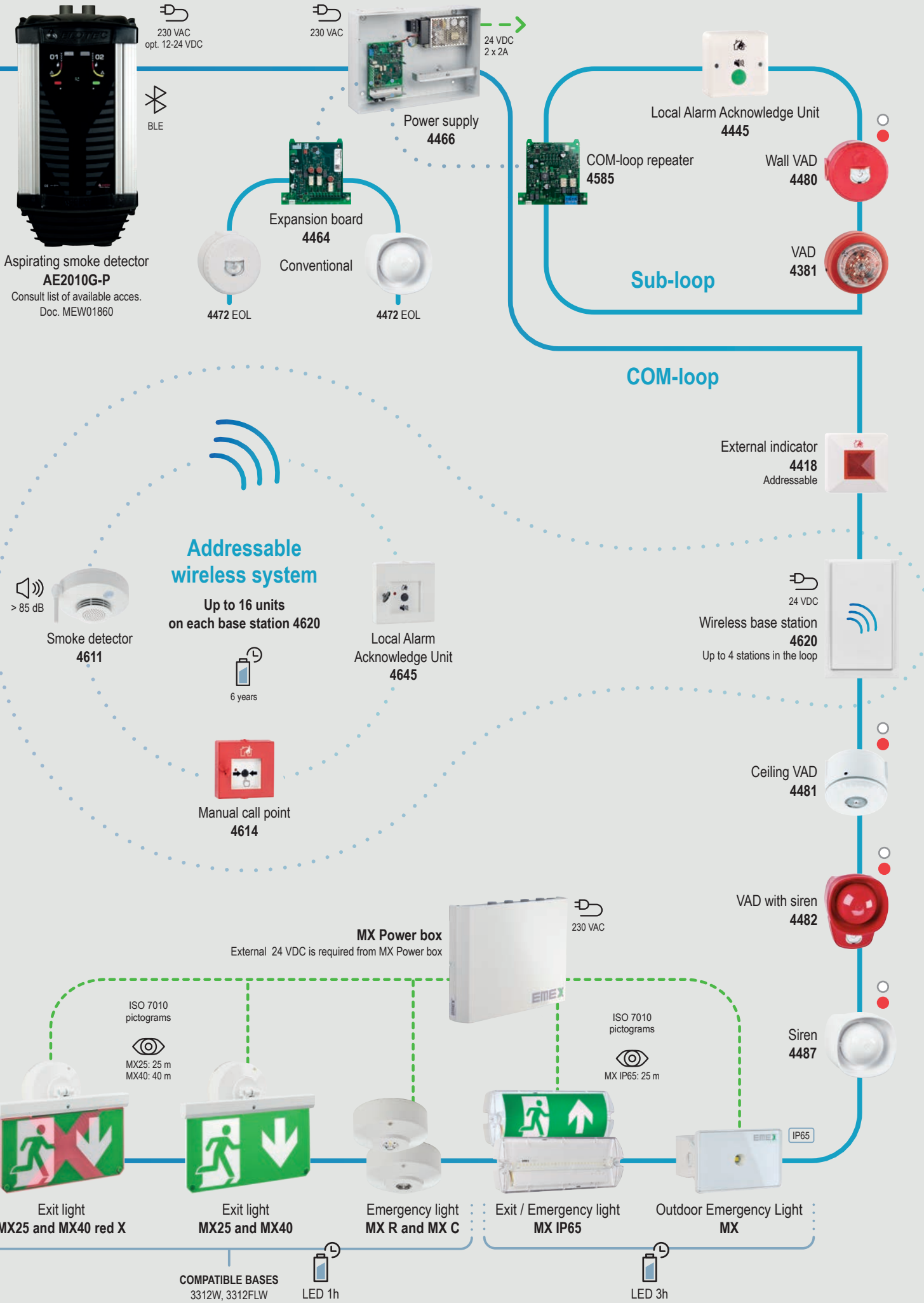


EBLOne

System diagram



Panasonic is continuously developing new loop units.
Please check our website for more details: www.panasonic-fire-security.com

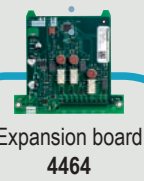


**Aspirating smoke detector
AE2010G-P**
Consult list of available acces.
Doc. MEW01860

230 VAC
opt. 12-24 VDC
BLE



**Power supply
4466**



**Expansion board
4464**



4472 EOL

Conventional



4472 EOL



COM-loop repeater
4585

Sub-loop

COM-loop



Local Alarm Acknowledge Unit
4445



Wall VAD
4480



VAD
4381

**Addressable
wireless system**

Up to 16 units
on each base station 4620



Smoke detector
4611
> 85 dB



6 years



Manual call point
4614



Local Alarm
Acknowledge Unit
4645



Wireless base station
4620
Up to 4 stations in the loop



Ceiling VAD
4481



VAD with siren
4482



Siren
4487



MX Power box
External 24 VDC is required from MX Power box

ISO 7010 pictograms



MX25: 25 m
MX40: 40 m

ISO 7010 pictograms



MX IP65: 25 m



Exit light
MX25 and MX40 red X



Exit light
MX25 and MX40



Emergency light
MX R and MX C



Exit / Emergency light
MX IP65



Outdoor Emergency Light
MX

COMPATIBLE BASES
3312W, 3312FLW



LED 1h



LED 3h



Panasonic Fire & Security Europe AB

Jungmansgatan 12
SE-211 11 Malmö, Sweden
+46 (0) 40 697 7000
info.pfseu@eu.panasonic.com
www.panasonic-fire-security.com