

**Panasonic**



# ASPECT

Aspirating system

Safety innovation, our passion

[www.panasonic-fire-security.com](http://www.panasonic-fire-security.com)

# ASPECT

## Aspiration for all environments

Aspect offers the highest reliability of detection in all kinds of environments. In continuous development for more than 25 years, Aspect overcomes the most difficult conditions: large temperature changes, high amounts of dust, high humidity or corrosive gases.



All in one concept with addressable detector, integrated filters and built-in power supply.

VdS approved for detection classes A, B and C. Suited for any kind of installations; data center, freeze rooms, logistics center, heavy industry and many more.

Tested and approved according to EN54-4 and EN54-20. Listed within Panasonic's EN54-13 system approval.



230V  
12-24V



-30 to +55°C



<98%



IP44



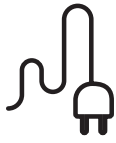
## ASPECT TOOL

All you need for the easiest configuration of the preferred operating parameters for your Aspect.

- › Aspect Tool app allows the configuration of the equipment in less than 2 minutes via smartphone
- › Connect through BLE to easily edit settings, timers and modes
- › Simple status read-out and configuration on your mobile device
- › Single touch adaptation to local air flow
- › Generate and e-mail full status reports



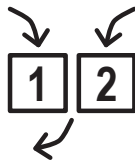
# All in one



**No need for external power supply**  
Integrated switch mode power supply that supports 230V, 12V or 24V



**Resistant to dust and corrosive gases**  
The IP44 enclosure remains over-pressurized and is built of anodized aluminum and halogen-free plastic



**Two detection areas**  
Separate sensors quickly tell which area is causing the alarm.  
Cover large areas with just one detector. Up to 2x100 meters of pipe in each area



**Integrated battery**  
Additional 8Ah back-up battery can be installed in the same housing



**For humid environments**  
The integrated condensation filter assures secure operation without false alarms in high moisture applications



## Installer friendly

- › Fully integrated into the Panasonic EBL512 G3 system. No need for additional I/O units, power supply or filters
- › Sampling pipes available in 3 and 4 meter lengths
- › Pre-glued connections and bends for fast and clean pipe assembly
- › THUB mounting console allows the pre-mounting of the sampling pipes



# All conditions

Aspect has been installed in all types of buildings and environments all over Europe. Aspect is a leading aspirating system for all applications.



**CORROSION**



**FROM -30° UP  
TO +55° C**



**EXTREME  
DUST**



**HUMIDITY**



**CLEAN  
ROOMS**

# PTDC Logistics Center

Helsinki, Finland



PTDC logistics center houses the logistical functions of the S-group's grocery business. The U-shaped building is Finland's largest and covers 195.000 m<sup>2</sup> with ceiling heights of up to 28 meters. The volume is a massive 3.56 million m<sup>3</sup>. Out of this, 330.000 m<sup>3</sup> are kept at -26°C by the use of carbon dioxide coolers. The heating of the buildings is taken care of by a geothermic system with 160 wells with a depth of 300 meters each.

## Challenges

- › High ceiling fire detection need (up to 28 m high)
- › Massive volume of 3.56 million m<sup>3</sup>
- › Operating temperatures down to - 26°C

## Panasonic fire alarm solutions

Intelligent solution with a mix of advanced point detectors (multi and smoke) and very robust Aspect addressable aspirating systems.

- › 30 EBL512 G3 Control Panels
- › More than 6.000 Multi / Smoke detectors
- › 410 ASPECT addressable aspirating systems with more than 80 Km pipes
- › EBL Graphics monitoring system

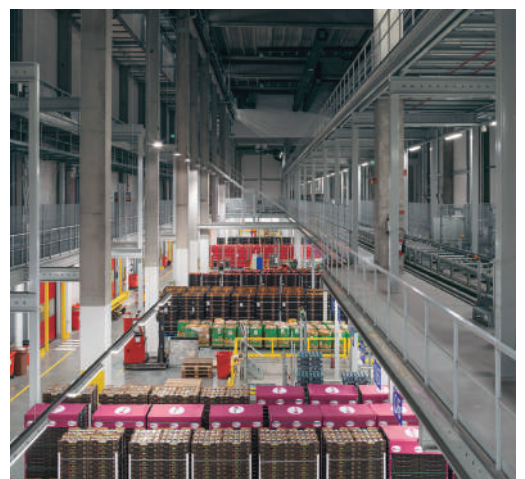
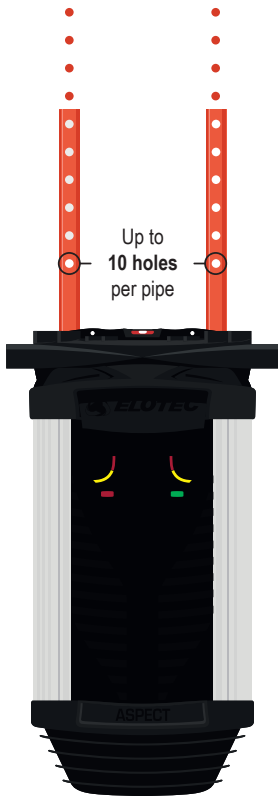


Image source: arviainen architecture studio - [www.parviainenark.fi](http://www.parviainenark.fi)

# All environments

With experiences from the toughest environments, we have developed an aspiration detector that can meet the most difficult environmental challenges as well as be ideal for standard applications or the cleanest of data centers.



Up to  
10 holes  
per pipe

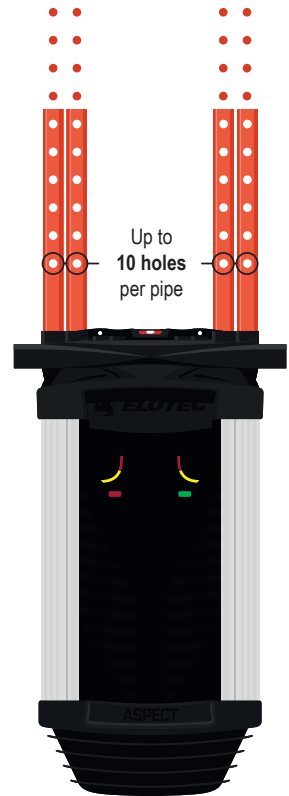
## GRIZZLE

**Highest reliability in smoke  
detection, even in extremely  
dusty and harsh environments**

Logistics centers, heavy industry,  
freeze rooms, elevator shafts

**CLASS B**  
2 x 100 m  
2 sensors  
2 detection zones

**CLASS C**  
4 x 100 m  
2 sensors  
2 detection zones



Up to  
10 holes  
per pipe

## LAZEER

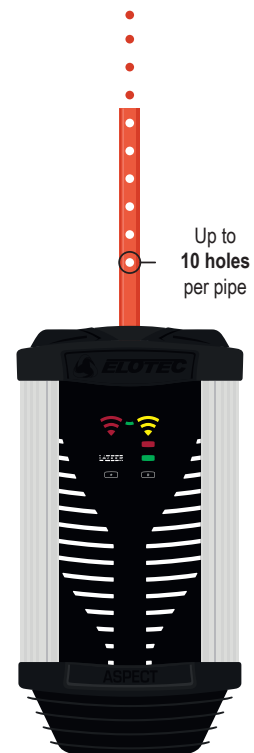
**Combined sensor technologies to  
achieve the highest possible sensitivity  
for all kinds of fire**

Clean rooms, data centers,  
laboratories

**CLASS A**  
Up to 2 x 100 m  
1 detection area



Up to  
5 holes  
per pipe



Up to  
10 holes  
per pipe

# Aspect accessories

We offer a complete range of accessories as well as specialized equipment for installations that demand extra cleaning or filtering. Panasonic has developed each unit with special features to counteract specific challenges or to improve the overall functionality of the system for all kinds of installations.

## PIPES

Extremely smooth inside to prevent build up of dust and to reduce transportation times. Thicker material for a very solid installation with fewer clips.



## SOCKETS & BENDS

They come with pre-applied sealant to eliminate the need for gluing, to save time and increase security. All parts prepared for matching clips of different types.



## VULCAN

Cyclone filter for extremely dusty environments for separation of large particles and condensation before they reach the detector.



## THUB

Mounting console for easy installation of the detector and pre-mounting of the pipes. For connection of up to 4 pipes with built-in condensation handling.



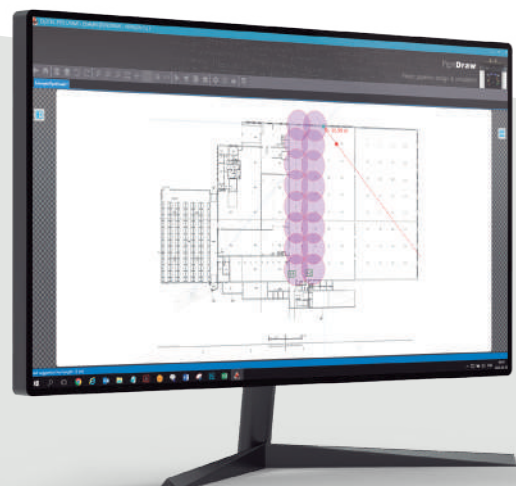
## ELOCLEAN

Automatic pipe cleaning system that facilitates use of aspiration also in remote and dusty environments. Selectable cleaning intervals from 1 to 7 times per week.

## PIPEDRAW

Easy to use PC program for design of even the most complex aspiration systems.

- › Automatic calculation of hole positions and diameters
- › Verification report with transportation time, sensitivity and coverage area for each hole
- › Customized installation information
- › Automatic generation of material needed-shopping list
- › For PDF, DWG and DXF files



**Panasonic Fire & Security Europe AB**

Jungmansgatan 12  
SE-211 11 Malmö, Sweden  
+46 (0) 40 697 7000  
info.pfseu@eu.panasonic.com  
www.panasonic-fire-security.com

Authorized distributor