

Panasonic



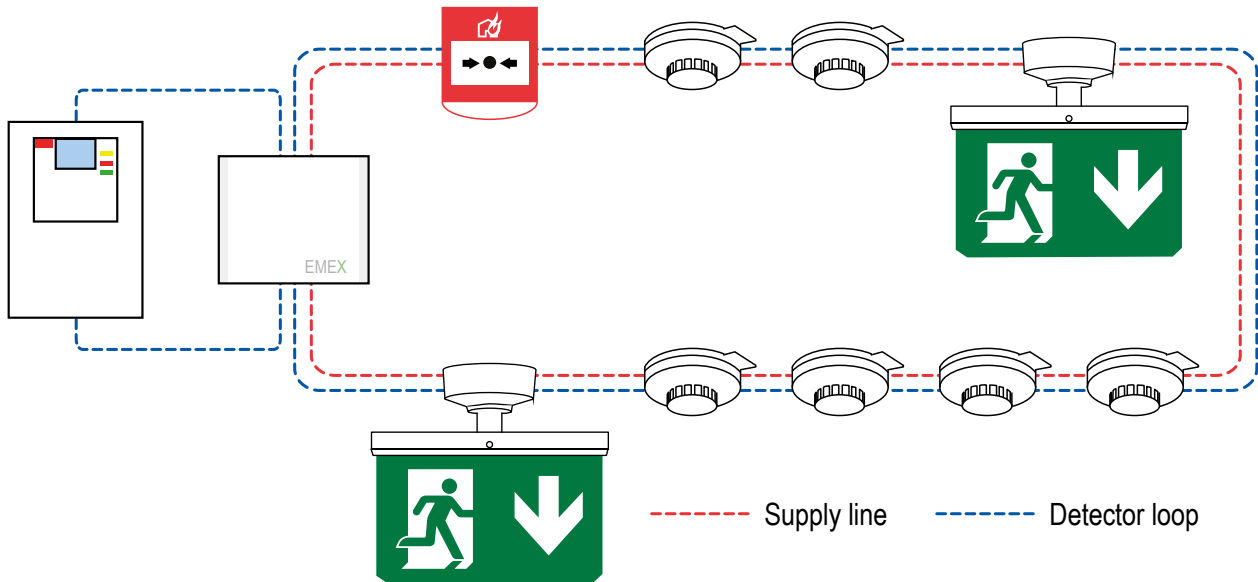
Emergency & exit lights

Safety innovation, our passion

www.panasonic-fire-security.com

Addressable and Integrated

Panasonic emergency and exit lights are fully integrated with the fire alarm system, thereby all units are connected to the same loop and possible to fully control and monitor. To make sure the addition of the lights does not compromise the loop length, all luminaires are powered by an external 24V supply.



› **Environmentally friendly system.**

Low power consumption and long product life time.

› **Low installation costs.**

Single cabling and no need for fire proof cable, due to self-maintained luminaires.

Only one control unit required for the fire alarm and emergency and exit lights.

› **Low maintenance costs.**

Fully automated testing, modern long life LED and high quality batteries.

EN 60598-2-22 EN 1838

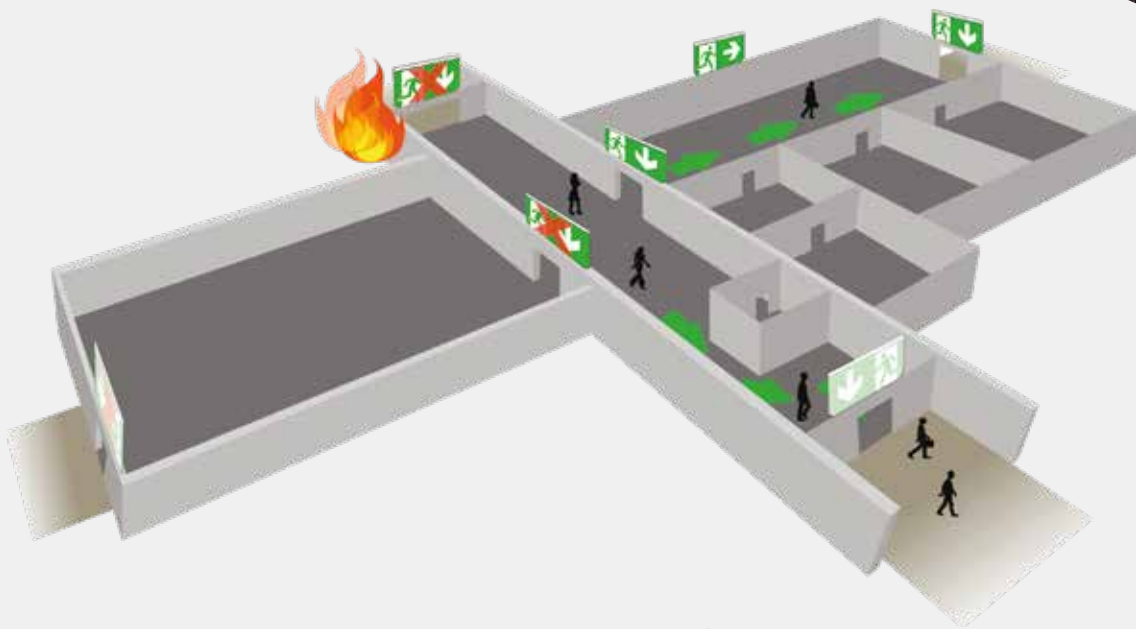
EN 62034 EN ISO:7010

Adaptive lights

A unique advantage with Panasonic's full integration between the fire alarm system and the exit lights is that we can provide a very innovative solution for the safest evacuation possible.

What we offer are fully software controlled exit lights that dynamically can switch to indicate that an escape route is unsafe to use, due to increased smoke levels. Thereby it is possible to minimize the risk that people get exposed to dangerous fire gases during an evacuation.

Evacuation, safer and smarter



Cost effective

The Panasonic system is cost effective in any aspect by reducing both set up costs as well as operational and maintenance costs.

MAINTENANCE

In the Panasonic system is both commissioning tests, monthly tests and annual tests taken care of automatically, without any involvement of a service technician. Any deviation is registered in the control panel and can also be remotely monitored via EBL Graphics and EBL Web, where you also can receive a notification in case of any deviations. LEDs with an expected lifetime of up to 20 years and batteries with up to 6 years further enhances the picture of a system with an attractive cost level.

SET UP

The self-contained luminaires removes the need for costly fire proof cable. The full integration with the fire alarm system also means that you will only have the cost for one cabling and one control panel, and an integrated system that is fully set up in one operation in the same intuitive SW environment.

OPERATIONAL

The low voltage system combined with modern long life LED luminaires and state of the art optics assures very attractive operational costs.



Applications

Emergency lights are designed to provide enough illumination in a facility during, an emergency situation, to prevent panic so a safe evacuation can be made even if the electrical system is out.

The exit signs help guiding people to safety during a fire or emergency situation, indicating the nearest or best way to evacuate. Emergency and exit lights is an important safety system to be installed in publicly accessible buildings like hospitals, universities, shopping centers, hotels, airports etc.



Adaptive exit lights

Panasonic adaptive exit lights provide the safest evacuation possible. Being fully integrated with the fire detection system, the signs can dynamically switch to indicate that an escape route is unsafe to use, minimizing the risk to enter smoke filled areas.

- › Available in 25 m and 40 m versions.
- › Self-contained with 1 hour back-up time.
- › Cost effective and environmentally friendly.
- › Simple and fast installation in standard detector base.



Exit lights

Panasonic exit signs clearly show you the nearest way out. Addressable, like the other products, means that they are constantly monitored and maintenance is made faster and easier.

- › Available in 25 m and 40 m versions.
- › Self-contained with 1 hour back-up time.
- › Cost effective and environmentally friendly.
- › Simple and fast installation in standard detector base.

Emergency lights

The emergency lights are fully programmable to be activated in the event of a mains power failure or an emergency situation or any other event you select. They make sure all evacuation routes, open spaces and stairs are clearly illuminated.

- › State of the art lens technology for increased coverage area.
- › Available in two versions, for open areas or for corridors.
- › Self-contained with 1 hour back-up time.
- › Cost effective and environmentally friendly.
- › Simple and fast installation in standard detector base.



Power Box



The emergency and exit lights are powered from a separate box. This set up with a separate supply line for the lights makes it possible to maintain the length of the loop and still add many luminaires.

- › 4 supply lines and up to 200 luminaires can be connected to each control unit.
- › Up to 1.000 meter cable per supply line.
- › If longer cables are needed more power boxes can be added to the supply line.



Commissioning

The exit and emergency lights are commissioned in the same intuitive EBL Win software used for the fire alarm system. Just as easy as all the other components they are added and programmed. No additional tools, equipment or training are needed.





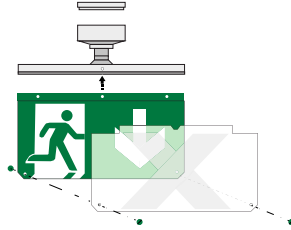


World Trade Center



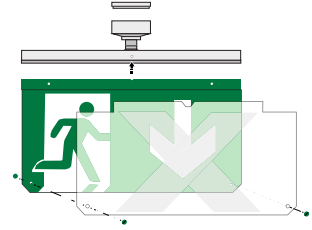
MX25 - Exit Signs

Art. No.	Description
825200	MX25 Exit light
825201	MX25 Exit light, red X
970020	MX25 red X board

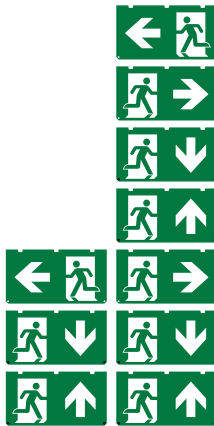


MX40 - Exit Signs

Art. No.	Description
840200	MX40 Exit light
840201	MX40 Exit light, red X
970021	MX40 red X board



MX25 - Pictograms



970000	MX25 pictogram, Left
970001	MX25 pictogram, Right
970002	MX25 pictogram, Down
970003	MX25 pictogram, Up
970004	MX25 pictogram, Left/Right
970005	MX25 pictogram, Down/Down
970016	MX25 pictogram, Up/Up

MX40 - Pictograms

970008	MX40 pictogram, Left
970009	MX40 pictogram, Right
970010	MX40 pictogram, Down
970011	MX40 pictogram, Up
970012	MX40 pictogram, Left/Right
970013	MX40 pictogram, Down/Down
970017	MX40 pictogram, Up/Up

MX25 - Pictogram Kits

970007	MX25 pictogram, HCP kit (Left, Right, Down, Down)
970030	MX25 pictogram, HCP kit Norway (left, right, up, up)

MX40 - Pictogram Kits

970015	MX40 pictogram, HCP kit (Left, Right, Down, Down)
970031	MX40 pictogram, HCP kit Norway (left, right, up, up)



MX - Panasonic Emergency light (IP41)

830001	MX Light Corridor
830002	MX Light Round



MX - Power Box

810000	MX Power box
--------	--------------

Accessories and spare parts

910002	Battery for MX
920001	MX25 Mounting frame
920007	MX Light Mounting frame
920009	MX25 Ball protection
920010	MX40 Ball protection
920013	Threaded rod plate (8 mm)
990015	MX Linea voltage card
990016	Meanwell Power
3312W / 3312FLW	Analog base

Panasonic Fire & Security Europe AB
Jungmansgatan 12
SE-211 11 Malmö, Sweden
+46 (0) 40 697 7000
info.pfseu@eu.panasonic.com
www.panasonic-fire-security.com



Authorized distributor